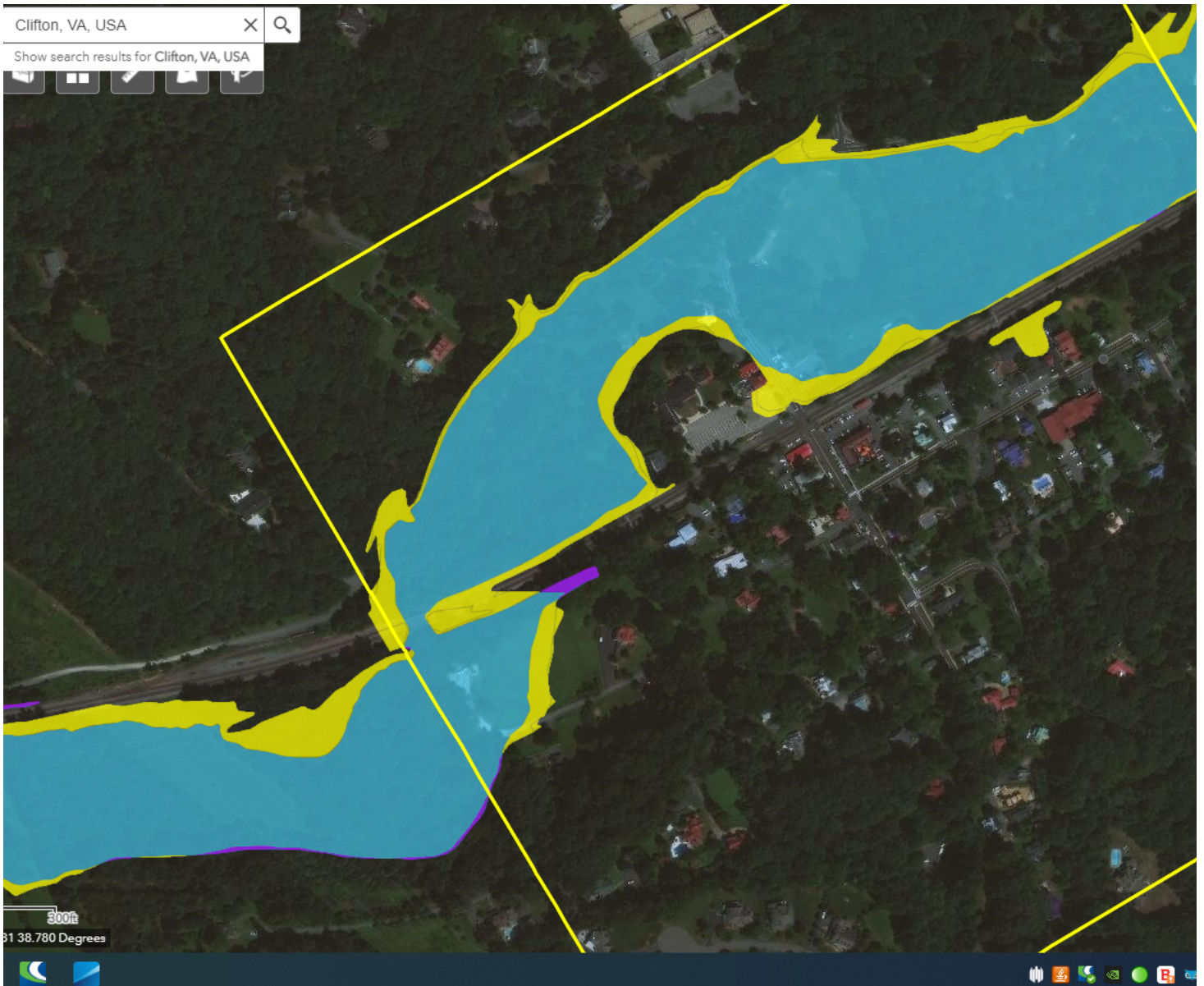


Letter from FEMA

Scott Peterson <speterson@gordon.us.com>  
To: Clifton Clerk <clerk@cliftonva.gov>  
Cc: Kathy Kalinowski <khk@baberkal.com>, Planning Commission <planning@cliftonva.gov>

Amanda,

There was only one area of increase by the train tracks at the end of Ford Lane, there were several areas where there was a decrease in the flood extent. Below is a map showing the change and blue remains the same. Let me know if you need any additional information.



[Quoted text hidden]